



Eagle Bay

The Eagle Bay is one of our most compact and affordable homes. However, there is a second bedroom that works well as a study or if you want the grandkids to stay it's a perfect spare bedroom.

The open plan living area still has plenty of room for entertaining your guests. There is also a fully enclosed garage for your car and secure storage.



The Clubhouse

Dalyellup Homes

Our small team of builders and architects have designed the stunning homes that are perfectly suited for the Dalyellup lifestyle.

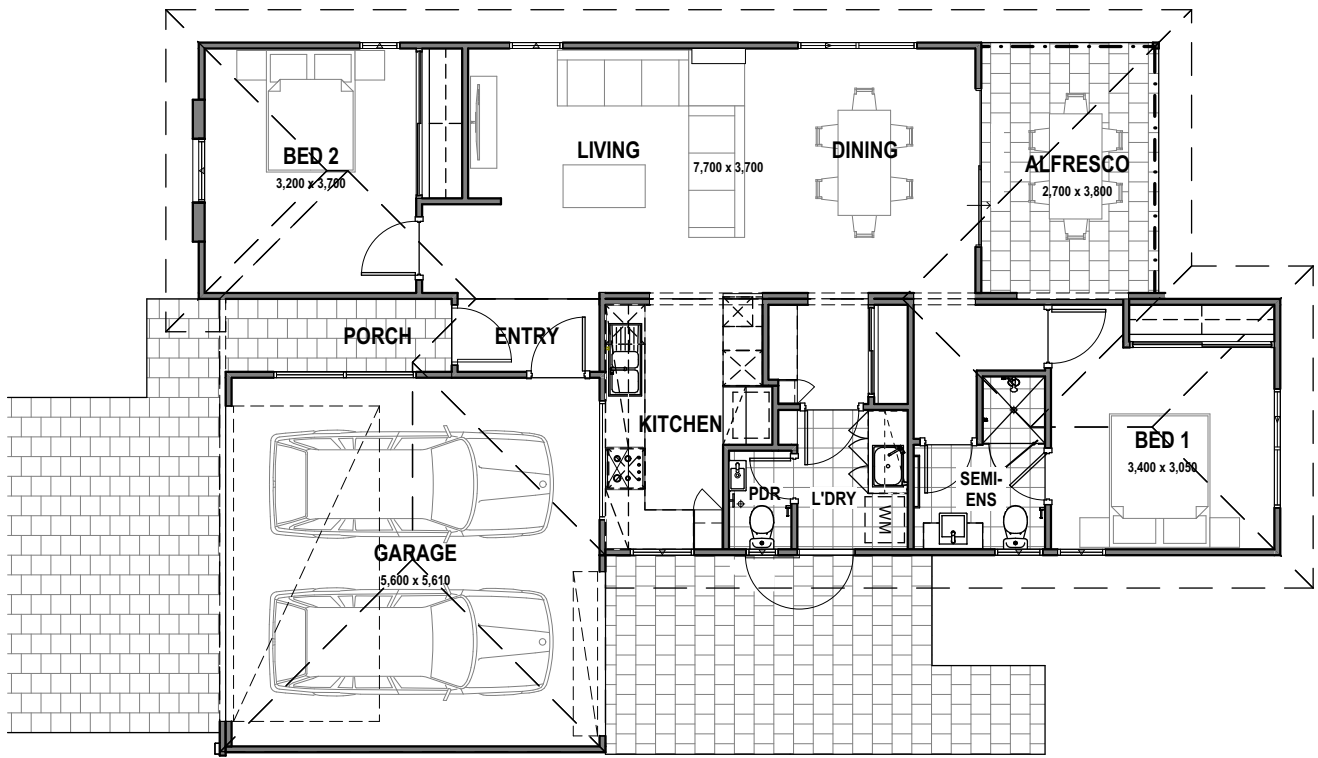
Come and discover exceptional building quality, from the spacious layouts to the premium fittings that come as standard in all our homes. You'll see that this is indeed a special village.



DALYELLUP
LIFESTYLE VILLAGE

For over 55's

dalyelluplifestylevillage.com.au



FEATURES

Standard Internal

- Reverse cycle air-conditioning
- Insulated roof and external walls
- Lined garage and alfresco areas for a quality look and feel
- Essastone bench tops throughout
- Soft close drawers throughout the kitchen & bathrooms
- Tiled splashback in kitchen
- LED downlights though out the home
- Built in robes to ALL bedrooms
- Dishwasher
- Electric hotplate and fan forced electric oven
- Stainless steel rangehood
- Electric hot water system
- TV point to each home

- WIFI connection provides you with access to security cameras, gate opening and internet connectivity
- Mixer tapware to sinks & basins in kitchen and bathrooms
- Carpet to all bedrooms
- Quality Tiles to all living and wet areas
- Rolla Blinds to all bedrooms
- Painting throughout including doors, door-frames and skirting boards

Standard External

- Landscaped gardens
- All fences supplied
- Lined garage and rear alfresco
- Clothes line

Love the lifestyle?
Now you can live it.

For all enquiries please
 call Adan on 0418 940 450
 or Lyn on 0403 188 114



DALYELLUP
 LIFESTYLE VILLAGE

For over 55's

dalzelllifestylevillage.com.au